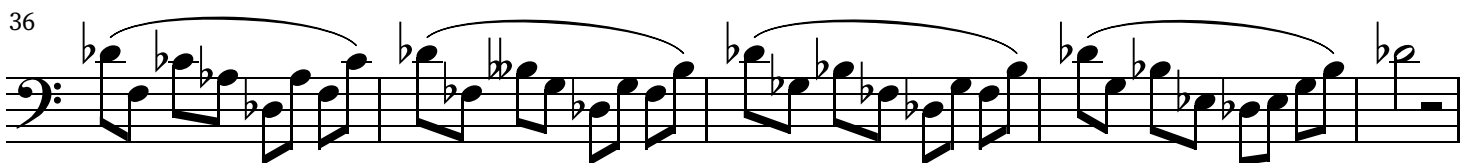
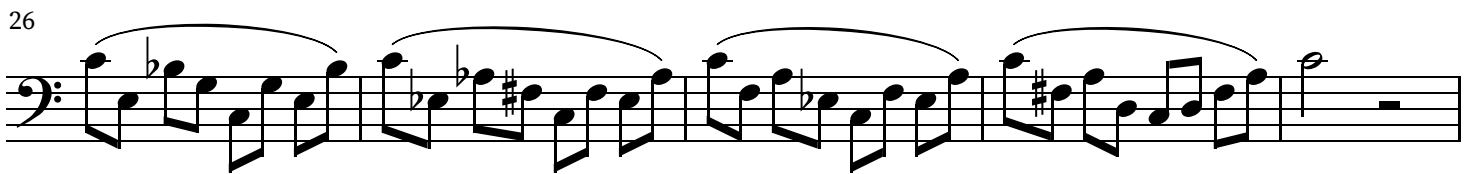
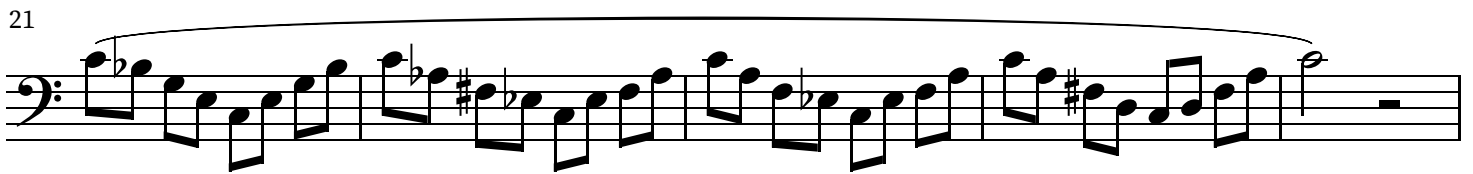
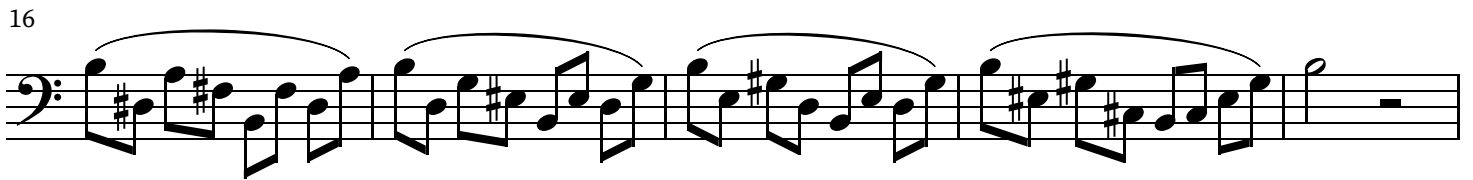
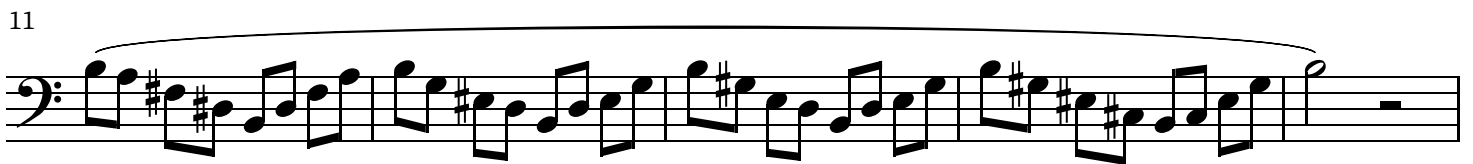


Plyometric Tonicizations III

Every sequence based around dominant 7th chords.

Alex Knutrud

$\text{♩} = 168$



41

2

A single musical staff in bass clef with a whole note rest at the end. The staff contains a melodic line of eighth notes with various accidentals (sharps, flats, naturals) and is enclosed in a long slur.

46

A single musical staff in bass clef with a whole note rest at the end. The staff contains four groups of eighth notes, each with a slur above it.

51

A single musical staff in bass clef with a whole note rest at the end. The staff contains a melodic line of eighth notes with various accidentals and is enclosed in a long slur.

56

A single musical staff in bass clef with a whole note rest at the end. The staff contains four groups of eighth notes, each with a slur above it.

61

A single musical staff in bass clef with a whole note rest at the end. The staff contains a melodic line of eighth notes with various accidentals and is enclosed in a long slur.

66

A single musical staff in bass clef with a whole note rest at the end. The staff contains four groups of eighth notes, each with a slur above it.

71

A single musical staff in bass clef with a whole note rest at the end. The staff contains a melodic line of eighth notes with various accidentals and is enclosed in a long slur.

76

A single musical staff in bass clef with a whole note rest at the end. The staff contains four groups of eighth notes, each with a slur above it.

81

A single musical staff in bass clef with a whole note rest at the end. The staff contains a melodic line of eighth notes with various accidentals and is enclosed in a long slur.

86 Musical staff 86: Bass clef, treble clef, key signature of one sharp (F#), and a 3-measure rest at the end.

91 Musical staff 91: Bass clef, treble clef, key signature of one sharp (F#), and a whole note rest at the end.

96 Musical staff 96: Bass clef, treble clef, key signature of one sharp (F#), and a whole note rest at the end.

101 Musical staff 101: Bass clef, treble clef, key signature of two flats (Bb, Eb), and a whole note rest at the end.

106 Musical staff 106: Bass clef, treble clef, key signature of two flats (Bb, Eb), and a whole note rest at the end.

111 Musical staff 111: Bass clef, treble clef, key signature of one sharp (F#), and a whole note rest at the end.

116 Musical staff 116: Bass clef, treble clef, key signature of one sharp (F#), and a whole note rest at the end.

121 Musical staff 121: Bass clef, treble clef, key signature of two flats (Bb, Eb), and a whole note rest at the end.

126 Musical staff 126: Bass clef, treble clef, key signature of two flats (Bb, Eb), and a whole note rest at the end.